



# Automatic Weather Station



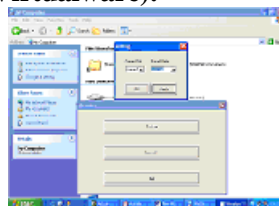
The 'Virtual' make Weather Station offers professional weather monitoring and good value for money. Our weather stations are known for their precision measurements, rugged construction, wide operating temperature range and low power consumption. The standard weather station consists of a weatherproof enclosure (IP65), which contains the data logger and power supply, and comes complete with a solar panel, tripod stand and basic range of sensors. Measure every major environmental condition with this powerful sensors & Data logger. Measurements can automatically stored in systems memory as per user selectable logging period. Comes with integral solar panel, which will easily keep the batteries charged throughout the year. A durable hard enclosure protects the data logger from weathering. User-replaceable SMF batteries. Data file is saved in Microsoft's Excel.

### Available Sensor Options:

- Air Temperature & Relative Humidity Sensor
- Wind Speed Sensor
- Wind Direction Sensor
- Rain Fall Sensor
- Water temperature Sensor
- Soil Temperature Sensor
- Air pressure sensor (Barometer)
- Water Level (Shaft Encoder Type) Sensor
- Hydrostatic Submersible Level Sensor
- Evaporation Sensor
- Snow Gauge ( Snow Water Equivalent) Sensor
- Ultrasonic Snow Depth Sensor

- Leaf Wetness Sensor
- Soil Moisture Sensor
- Electronic Tensiometer
- Solar Radiation Sensor (Pyranometer)
- Solar Radiation Sensor(Silicon Pyranometer)
- Ultra Violet Sensor
- Quantum Sensor
- IR Pyranometer Sensor
- Line quantum Sensor
- Passive Cloud Cover Sensor
- Fog Sensor
- Visibility Sensor
- Infrared remote Temperature Sensor

### Application Software (Virtualware):



Virtualware is a user-friendly, Menu Driven, Windows based weather station's software allows you to view & save collected data. Data file is saved in Microsoft's Excel format.

**Data Download Options:** You can choose any one option given below, for data download from Automatic Weather Station to your computer.

**Data Shuttle:**



The data shuttle is a pocket-sized device that can be used to download & transport the data from weather station to a computer (USB Port), allowing the instrument to stay in place for continuous monitoring/recording. The shuttle connects to a PC and is used with the “Virtualware” to download data.

**Ethernet LAN :**



Through Ethernet LAN to Computer. You can enter IP Address of your computer and connect to the Automatic Weather station. You can also get instantaneous data just press Monitor Menu. Used with the “Virtualware” software to download data.

**GSM/GPRS Modem:**



The GSM/GPRS Modem is a standard RS232 port based GSM modem to receive data on the PC side which sent by the logger end. This Modem works with Virtual GSM Ware Software to encoded information into database & finally into a presentable MS-Excel Report. A communication cable, Power Adopter & Antenna is shipped along with the modem. This modem too requires GSM SIM cards to function.

**Features:**

LCD (16 X 2) to display the instrument status

Membrane Keyboard is provided for on site programming without help of computer.

Memory range more than 4000 data sets (extendable to more at extra cost)

User Programmable Logging Interval from 1 min to 24 Hour

Adjustable Tripod Stand from 6 to10 Feet.

Rechargeable SMF batteries with integral solar panel, which will easily keep the batteries charged throughout the year.

User-friendly Virtualware application software. Data retrieval by pocket size data shuttle to your computer

Suitable for mounting in a variety of locations. Comes with weatherproof enclosure

Operating Temperature: -20 to 70 °C. Operating Humidity: 0 to 95 % non-condensing.

Data Retrieval options: The standard Weather Station Comes with data retrieval option through Data Shuttle. But you can also choose following data retrieval options – Thought Telephone Line Modem / GSM Modem At Extra Cost.

Factory: 1105/1, Salempur Rajputana Industrial Estate, Roorkee – 247667

District - Haridwar (Uttarakhand) India

Telefax: +91-1332-266186, Cell: +91-9412072697

Email: virtualroorkee@yahoo.com; vsp\_roorkee@yahoo.com

Web: www.virtualweb.co.in

Hydrology, Meteorology, Forestry, Agro-Meterology, Scientific & Soil Testing Equipments.

जल, मौसम, कृषि, वन, मृदा विज्ञान एवं अन्य वैज्ञानिक उपकरण