



## Digital Water Level Recorder (Radar Type)



“Virtual” make Digital Water Level Recorder (Radar Type) is a fully computerized, digital and self contained power source system, fitted with Data Logger and battery charging solar panel with rechargeable, maintenance free batteries complete with sealed waterproof enclosure for Data Logger, Solar charger and battery. It should be complete with facility to transport Data from Data Logger to a P.C. through a pocket able data shuttle. 16-x1 alphanumeric display and 4x2 membrane keypad is provided at front panel of data logger for programming data logger and monitoring sensor reading at site without the help of computer. This system used SEBA make Radar type Level Sensor.

### Features & Specifications:

Sensor Input – Radar type Water level Sensor (SEBA, Germany make)

Measured Parameter – Date, Time, Water Level.

LCD (16 X 2) to display the instrument status, Suitable for mounting in a variety of locations.

User Programmable Logging Interval from 1 min to 24 Hour

User-friendly Virtualware application software, Data retrieval by pocket size data shuttle to your computer (USB Port)

Operating Temperature: -20 to 70 °C. Operating Humidity: 0 to 95 % non-condensing.

Memory range more than 16000 data sets (extendable to more at extra cost), Membrane Keyboard is provided for onsite programming without help of computer. Comes with weatherproof enclosure

Rechargeable SMF batteries with integral solar panel, which will easily keep the batteries charged.

Compact system with analogue output 4 - 20 mA

Measuring range: 0 - 30 m

Accuracy: +/- 3 mm

Resolution: 1 mm

Measuring principle: pulse runtime procedure

Current consumption: 22.4 mA

Radiation angle: 10°

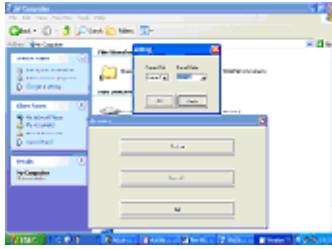
Sensor protection: horn antenna (75 mm Ø)

(--> non-sensitive with condensate and drop formation)

2 connection wires

Data Retrieval options: The standard System Comes with data retrieval option through Data Shuttle. But you can also choose following data retrieval options – Thought Telephone Line Modem / GSM Modem At Extra Cost.

## Application Software (Virtualware):



Virtualware is a user-friendly, Menu Driven, Windows based weather station's software allows you to view & save collected data. Data file is saved in Microsoft's Excel format.

**Data Download Options:** You can choose any one option given below, for data download from Digital Water Level Recorder to your computer.

### Data Shuttle:



The data shuttle is a pocket-sized device that can be used to download & transport the data from Digital Water Level Recorder to a computer (USB Port), allowing the instrument to stay in place for continuous monitoring/recording. The shuttle connects to a PC and is used with the "Virtualware" to download data.

### Ethernet LAN :



Through Ethernet LAN to Computer. You can enter IP Address of your computer and connect to the Digital Water Level Recorder. You can also get instantaneous data just press Monitor Menu. Used with the "Virtualware" software to download data.

### GSM/GPRS Modem:



The GSM/GPRS Modem is a standard RS232 port based GSM modem to receive data on the PC side which sent by the logger end. This Modem works with Virtual GSM Ware Software to encoded information into database & finally into a presentable MS-Excel Report. A communication cable, Power Adopter & Antenna is shipped along with the modem. This modem too requires GSM SIM cards to function.

Factory: 1105/1, Salempur Rajputana Industrial Estate, Roorkee – 247667

District - Haridwar (Uttarakhand) India

Telefax: +91-1332-266186, Cell: +91-9412072697

Email: virtualroorkee@yahoo.com; vsp\_roorkee@yahoo.com

Web: www.virtualweb.co.in

Hydrology, Meteorology, Forestry, Agro-Meteorology, Scientific & Soil Testing Equipments.

जल, मौसम, कृषि, वन, मृदा विज्ञान एवं अन्य वैज्ञानिक उपकरण