



Digital Soil Moisture Recorder

The 'Virtual' make Soil Moisture Recorder offers professional Soil monitoring and good value for money. The standard Soil Moisture Recorder consists of a weatherproof enclosure, which contains the data logger and power supply, and comes complete with a solar panel, tripod stand and Soil Moisture Sensors (Watermark) & Temperature sensor. Measure every major environmental condition with this powerful sensors & Data logger. Measurements can automatically stored in systems memory as per user selectable logging period. Comes with integral solar panel, which will easily keep the batteries charged throughout the year. A durable hard enclosure protects the data logger from weathering. User-replaceable SMF batteries. Data file is saved in Microsoft's Excel.

Soil Moisture Sensor:

Type: Gypsum block
Range: 0 to 200 Centibar
Output: Change of Resistance



Soil Temperature Sensor: (Optional)

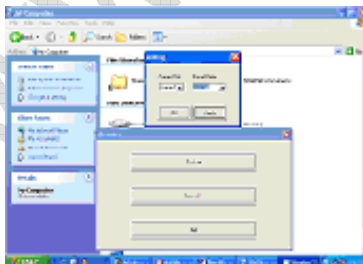
Range: - 10 to 110 ° C.
Accuracy: ± 0.5 ° C
Resolution: 0.1 ° C
Output: Analog (10 mV / ° C)



Features:

Sensor Inputs - 7 Soil Moisture Suction Sensor, 1 Soil Temperature Sensor
Measured Parameter – Date, Time, Soil Moisture Suction, Soil Temperature
LCD (16 X 2) to display the instrument status
Membrane Keyboard is provided for on site programming without help of computer.
Adjustable Tripod Stand from 6 to 10 Feet.
User Programmable Logging Interval from 1 min to 24 Hour
Memory range more than 8000 data sets (extendable to more at extra cost)
Rechargeable SMF batteries with integral solar panel, which will easily keep the batteries charged throughout the year.
User-friendly Virtualware application software. Data retrieval by pocket size data shuttle to your computer
Suitable for mounting in a variety of locations
Operating Temperature: -20 to 70 °C. Operating Humidity: 0 to 95 % non-condensing.
Comes with weatherproof enclosure

Application Software (Virtualware):



Virtualware is a user-friendly, Menu Driven, Windows based weather station's software allows you to view & save collected data. Data file is saved in Microsoft's Excel format.

Data Download Options: You can choose any one option given below, for data download from Automatic Weather Station to your computer.

Data Shuttle:



The data shuttle is a pocket-sized device that can be used to download & transport the data from weather station to a computer (USB Port), allowing the instrument to stay in place for continuous monitoring/recording. The shuttle connects to a PC and is used with the “Virtualware” to download data.

Ethernet LAN :



Through Ethernet LAN to Computer. You can enter IP Address of your computer and connect to the Automatic Weather station. You can also get instantaneous data just press Monitor Menu. Used with the “Virtualware” software to download data.

GSM/GPRS Modem:



The GSM/GPRS Modem is a standard RS232 port based GSM modem to receive data on the PC side which sent by the logger end. This Modem works with Virtual GSM Ware Software to encoded information into database & finally into a presentable MS-Excel Report. A communication cable, Power Adaptor & Antenna is shipped along with the modem. This modem too requires GSM SIM cards to function.

Following Sensors can be connected with above system:

Air Temperature & Relative Humidity Sensor
Wind Speed Sensor
Wind Direction Sensor
Rain Fall Sensor
Water temperature Sensor
Soil Temperature Sensor
Air pressure sensor (Barometer)
Evaporation Sensor

Leaf Wetness Sensor
Solar Radiation Sensor (Pyranometer)
Solar Radiation Sensor(Silicon Pyranometer)
Ultra Violet Sensor
Quantum Sensor
IR Pyranometer Sensor
Line quantum Sensor
Infrared remote Temperature Sensor

Factory: 1105/1, Salempur Rajputana Industrial Estate, Roorkee – 247667

District - Haridwar (Uttarakhand) India

Telefax: +91-1332-266186, Cell: +91-9412072697

Email: virtualroorkee@yahoo.com; vsp_roorkee@yahoo.com

Web: www.virtualweb.co.in

Hydrology, Meteorology, Forestry, Agro-Meteorology, Scientific & Soil Testing Equipments.

जल, मौसम, कृषि, वन, मृदा विज्ञान एवं अन्य वैज्ञानिक उपकरण